

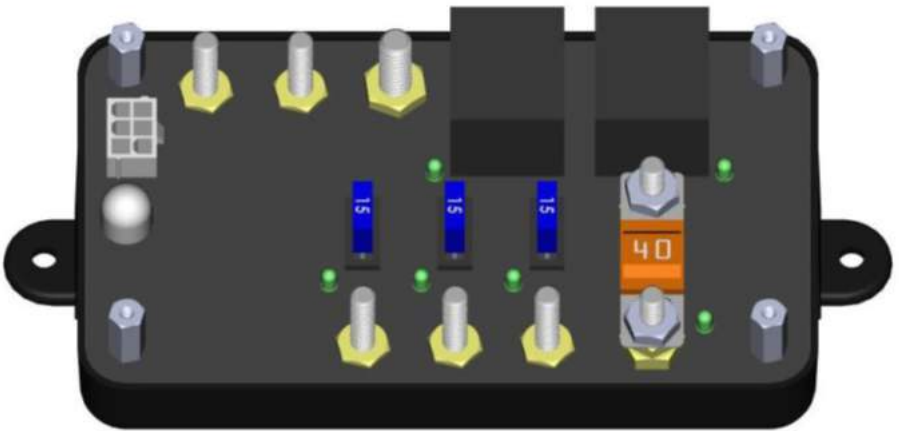


# PURKEYS

## DUAL SHIELD LVD FOR ISUZU

---

### INSTALLATION GUIDE





# CONTENTS

---

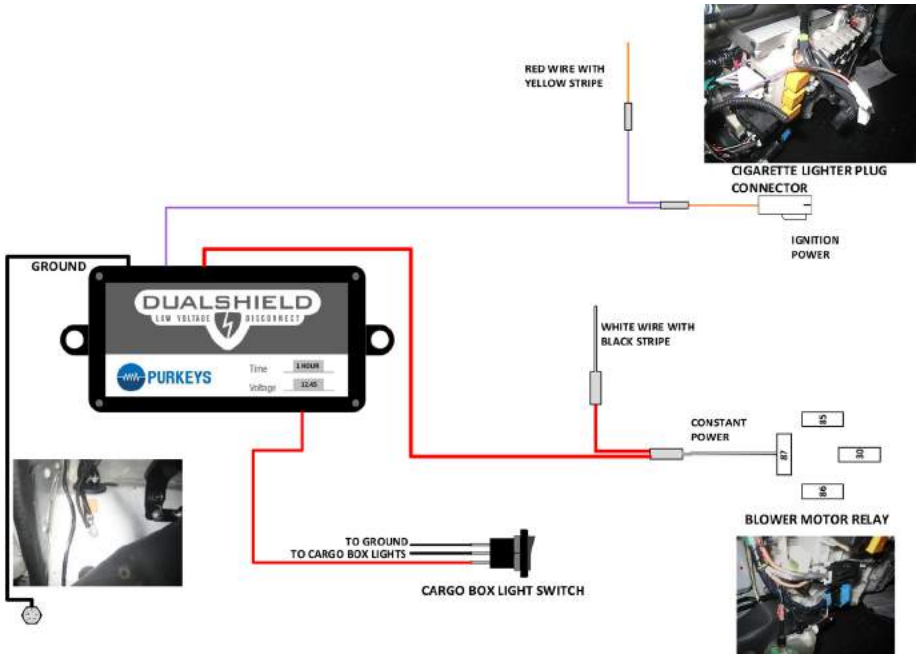
General Information.....	2
LVD Diagram .....	3
LVD Installation .....	4
Parts List.....	9
Limited Commercial Warranty Policy .....	12

## GENERAL INFORMATION

The Purkeys Low Voltage Disconnect (LVD) is designed to drastically reduce the parasitic drain on the vehicle's batteries. Parasitic loads are caused by electrical devices such as interior lights, radios, child safety devices, etc. While these devices are critical to operation, there is a risk that the parasitic drain will be enough to discharge the battery and keep the vehicle from starting. The Purkeys LVD is a device that can be programmed to shut off parasitic loads either by voltage or by time. While the ignition is on, this device will not impact any of the electrical devices. The Purkeys LVD has built-in LEDs that indicate its status.

# DUAL SHIELD LVD INSTALLATION GUIDE

## LVD DIAGRAM



## LVD INSTALLATION

---

Step 1: Remove the positive lead from the truck battery to avoid shorting circuits.



Step 2: In order to access the circuits needed for LVD installation, remove the instrument cluster panel. This will give access to the screws to remove the lower dash panel.



Step 3: Disconnect the hazard connector attached to the instrument cluster that was removed in step 2.



Step 4: Place the instrument cluster panel on top of the dash and out of the way.



## DUAL SHIELD LVD INSTALLATION GUIDE

Step 5: Remove the 2 plastic push rivets located on the lower panel in front of the passenger seat. Remove this panel and set to the side.



Step 6: Remove the 4 screws that secure the middle panel.



Step 7: Remove the plastic push rivet located on the lower left corner of the middle panel.



Step 8: Remove the two connectors from the upper cigarette lighter plug.



Step 9: Remove the two connectors from the lower cigarette lighter plug.



Step 10: Remove the extra connector from the holder and set the middle panel to the side.



Step 11: Mount the LVD just inside the driver side door, using the supplied L bracket and hardware.



Step 12: Connect the ground wire from the LVD to a good chassis ground located near the LVD.





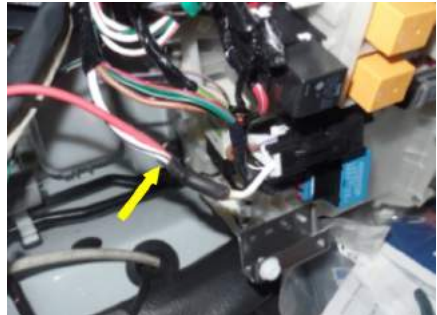
## DUAL SHIELD LVD INSTALLATION GUIDE

Step 13: Route the purple (ignition) and red (constant power) wires across the steering column and over to the cigarette lighter plugs.



**CAUTION:** Avoid pinch points near steering column.

Step 14: Connect the red wire marked "Battery Positive" to the white with black stripe wire on the blower motor relay connector. Heat shrink this connection.



Step 15: Cut the red with yellow stripe cigarette lighter plug wire and connect the purple wire marked "Ignition" to the connector end of this wire. Heat shrink this connection.



Step 16: Connect the other leg of the purple LVD ignition wire to the end of the red with yellow stripe cigarette lighter wire cut in step 15. Heat shrink this connection.



Step 17: Route the red wire marked “LVD Output” up toward the cargo box light switch.



Step 18: Connect the LVD Output wire to the bottom terminal on the cargo light switch. The middle wire connects to the lights, and the top wire connects to a good chassis ground.



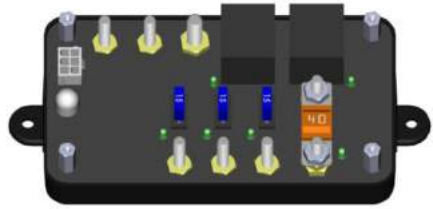
Reinstall all instrument panels.

LVD installation complete.

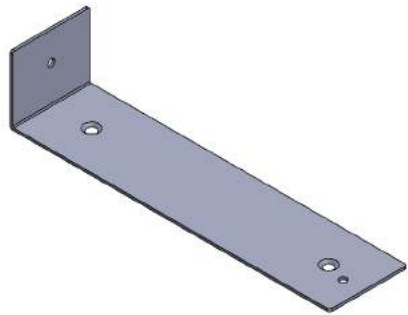
# DUAL SHIELD LVD INSTALLATION GUIDE

## PART LIST

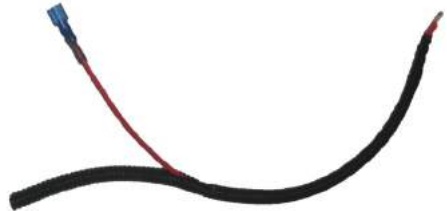
SMART LVD  
Part #: DSLVD-01



BRACKET, L FOR SMART  
LVD  
Part #: PL00098



HARNESS, OUTPUT  
FROM LVD TO ISUZU  
CARGO LIGHTS  
Part #: H-00434

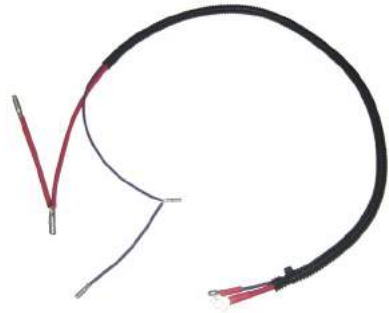


HARNESS, GROUND  
FROM LVD TO ISUZU  
CHASSIS  
Part #: H-00435



**HARNESS, IGNITION  
AND CONSTANT  
POWER FROM LVD TO  
ISUZU TRUCK**

Part #: H-00436



**GUIDE, USER LVD  
ASSEMBLY FOR ISUZU**

Part #: INST057



# DUAL SHIELD LVD INSTALLATION GUIDE

## LIMITED COMMERCIAL WARRANTY POLICY

Purkeys Fleet Electric, Inc. (hereafter “Purkeys”), warrants each product to be free of defects in material or workmanship under normal use and service. This warranty is for the benefit of Original Equipment Manufacturers, Dealers, Warehouse Distributors, Fleets, or other End Users (hereafter “Customers”) and covers products manufactured by Purkeys and sold new to Customers either directly by Purkeys or by its authorized dealers, distributors, or agents. The length of the Warranty Period is 24 months.

The warranty period commences on the in-service or install date and is not transferable. Failure to provide the in-service or install date on the warranty claim form will cause the warranty period to begin on the date the part was manufactured or date of sale recorded on the original sales invoice, whichever is earlier.

A completed warranty claim form should accompany all parts submitted to Purkeys for consideration for repair or replacement under warranty. The submitted claim form should contain all of the information required. Lack of a properly or fully completed claim form will result in delay or denial of warranty claim. Claims must be submitted no later than 30 days after part is removed.

This warranty does not apply if, in sole judgement of Purkeys, the product has been damaged or subjected to accident, faulty repair, improper adjustment, improper installation or wiring, neglect, misuse, or alteration or if the product failure is caused by defects in peripheral vehicle components or components attached to the Product or failure of a part not manufactured by Purkeys.

This warranty shall not apply if any Purkeys product is used for a purpose for which it is not designed or is in any way altered without the specific prior written consent of Purkeys. ANY Product alleged by a Customer to be defective must be inspected by Purkeys as a part of the warranty claims process in order to confirm that the part has failed as a result of a defect in material or workmanship.

Transportation for products and parts submitted to Purkeys for warranty consideration must be prepaid by Customer. Repaired or replaced products and or components will be returned to Customer pre-paid by Customer or “freight collect” to the address provided by Customer in the warranty claim form. No charge will be made for labor or material in effecting such repairs.

The Warranty provided by Purkeys hereunder is specifically limited to repair or replacement of the Product as Purkeys deems most appropriate in its sole discretion. Purkeys neither assumes nor authorizes any other person to assume on its behalf any other warranty or liabilities in connection with Purkeys products. The Warranty does not apply to fuses or other “consumable” or maintenance items which are or may be a part of any Purkeys product.

**THIS WARRANTY DOES NOT APPLY TO LOSS OF VEHICLE OR EQUIPMENT, LOSS OF TIME, INCONVENIENCE, OR OTHER INCIDENTAL OR CONSEQUENTIAL DAMAGES. PURKEYS SPECIFICALLY DISCLAIMS AND SHALL NOT BE LIABLE FOR INCIDENTAL OR CONSEQUENTIAL DAMAGES arising out of or from the use of Purkeys products by the Customer.**

**THIS LIMITED WARRANTY IS IN LIEU OF ALL OTHER WARRANTIES, INCLUDING COMMON LAW WARRANTIES OF FITNESS FOR A PARTICULAR PURPOSE, MERCHANTABILITY, AND ANY OTHER EXPRESS OR IMPLIED WARRANTIES. ALL OTHER SUCH WARRANTIES ARE SPECIFICALLY DISCLAIMED.**

This Limited Commercial Warranty supersedes all previous Warranty Policies issued by Purkeys and any of its suppliers.

# DUAL SHIELD LVD INSTALLATION GUIDE



***WATT Keeps You Trucking***