

PURKEYS

**P808-1021FC
INVERTER HARNESS**

INSTALLATION GUIDE

Doc 1.01
INST062

STEP 1

Unpack the plate assembly and both positive and negative cables.

**STEP 2**

Insert the negative cable thru the plate assembly.

**STEP 3**

Insert the positive cable thru the plate assembly.

Note: Do not tighten dome nut against the cables until the inverter is mounted and cables are connected.



STEP 4

The inverter will be mounted under the bunk. Drill a hole, using a 3 ½ inch hole saw, into the floor near the inverter to route the cables through.

Caution: Be sure and verify there is nothing under this location that could be damaged when the hole is drilled.

**STEP 5**

The cable pass through flange will be located next to the inverter. Use the supplied self-drilling screws and attach the pass through.

**STEP 6**

Connect the 10ga black chassis ground wire to the chassis ground screw on the inverter marked (Ground).



STEP 7

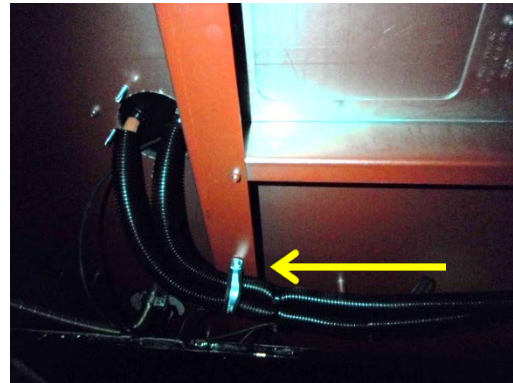
Attach the input cables and Install the plastic input post protectors.

Note: Be sure to observe polarity, reversing these connections will cause major damage to the inverter.



STEP 8

Begin routing the inverter cables towards the battery box. Use a cable clamp in the middle of the cross member to prevent the cables from sagging.



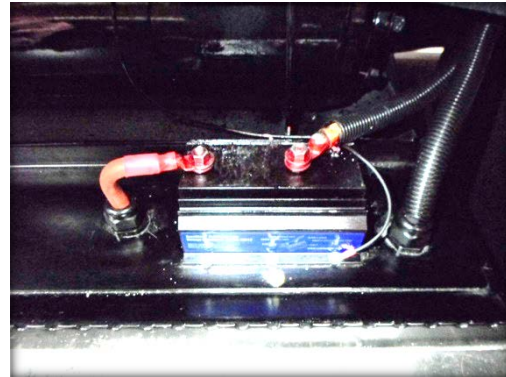
STEP 9

Attach the chassis ground screw to a cross member.



STEP 10

Attach the Inverter positive cable to the battery separator. Attached the 2ft 1/0 cable (Part# CA00108) to the battery separator.

**STEP 11**

Before you can connect to the batteries you must trim the plastic on the battery cables. This is to ensure the fuse cube sits flat onto the metal surface of the terminal.

**STEP 12**

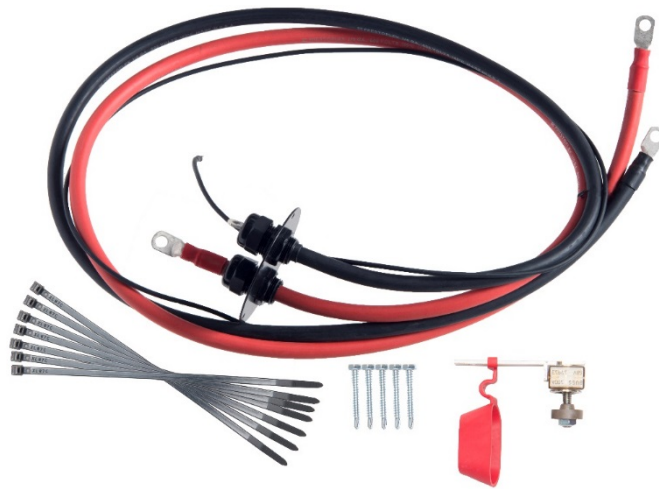
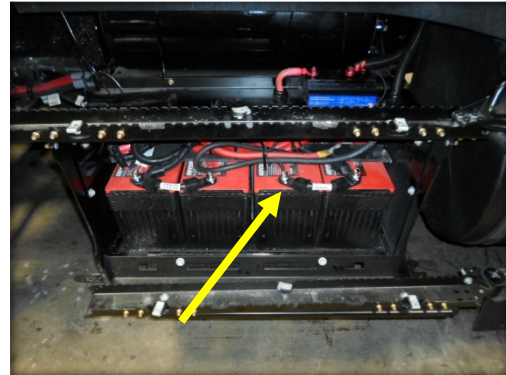
Connect the inverter positive cable to the 150 amp fuse cube. Tighten the fuse cube nut.



STEP 13

Attach the Inverter negative cable to the battery.

Note: Due to the electronics used in Inverters it is common for there to be a large spark when the last connection is made.



Required Installation Tools

- Electric or cordless drill
- 3 1/2" hole saw and arbor
- 5/16 socket and holder for drill
- 7/16 wrench or socket
- 9/16 wrench or socket
- Channel locks
- Tape Measure

LIMITED COMMERCIAL WARRANTY POLICY

Purkeys Fleet Electric, Inc. (hereafter "Purkeys"), warrants each product to be free of defects in material or workmanship under normal use and service. This warranty is for the benefit of Original Equipment Manufacturers, Dealers, Warehouse Distributors, Fleets, or other End Users (hereafter "Customers") and covers products manufactured by Purkeys and sold new to Customers either directly by Purkeys or by its authorized dealers, distributors, or agents. The length of the Warranty Period is 24 months.

The warranty period commences on the in-service or install date and is not transferable. Failure to provide the in-service or install date on the warranty claim form will cause the warranty period to begin on the date the part was manufactured or date of sale recorded on the original sales invoice, whichever is earlier.

A completed warranty claim form should accompany all parts submitted to Purkeys for consideration for repair or replacement under warranty. The submitted claim form should contain all of the information required. Lack of a properly or fully completed claim form will result in delay or denial of warranty claim. Claims must be submitted no later than 30 days after part is removed.

This warranty does not apply if, in sole judgement of Purkeys, the product has been damaged or subjected to accident, faulty repair, improper adjustment, improper installation or wiring, neglect, misuse, or alteration or if the product failure is caused by defects in peripheral vehicle components or components attached to the Product or failure of a part not manufactured by Purkeys.

This warranty shall not apply if any Purkeys product is used for a purpose for which it is not designed or is in any way altered without the specific prior written consent of Purkeys. ANY Product alleged by a Customer to be defective must be inspected by Purkeys as a part of the warranty claims process in order to confirm that the part has failed as a result of a defect in material or workmanship.

Transportation for products and parts submitted to Purkeys for warranty consideration must be prepaid by Customer. Repaired or replaced products and or components will be returned to Customer pre-paid by Customer or "freight collect" to the address provided by Customer in the warranty claim form. No charge will be made for labor or material in effecting such repairs.

The Warranty provided by Purkeys hereunder is specifically limited to repair or replacement of the Product as Purkeys deems most appropriate in its sole discretion. Purkeys neither assumes nor authorizes any other person to assume on its behalf any other warranty or liabilities in connection with Purkeys products. The Warranty does not apply to fuses or other "consumable" or maintenance items which are or may be a part of any Purkeys product.

THIS WARRANTY DOES NOT APPLY TO LOSS OF VEHICLE OR EQUIPMENT, LOSS OF TIME, INCONVENIENCE, OR OTHER INCIDENTAL OR CONSEQUENTIAL DAMAGES. PURKEYS SPECIFICALLY DISCLAIMS AND SHALL NOT BE LIABLE FOR INCIDENTAL OR CONSEQUENTIAL DAMAGES arising out of or from the use of Purkeys products by the Customer.

THIS LIMITED WARRANTY IS IN LIEU OF ALL OTHER WARRANTIES, INCLUDING COMMON LAW WARRANTIES OF FITNESS FOR A PARTICULAR PURPOSE, MERCHANTABILITY, AND ANY OTHER EXPRESS OR IMPLIED WARRANTIES. ALL OTHER SUCH WARRANTIES ARE SPECIFICALLY DISCLAIMED.

This Limited Commercial Warranty supersedes all previous Warranty Policies issued by Purkeys and any of its suppliers.