

# PURKEYS

## INVERTER HARNESS INSTALLATION FOR INTERNATIONAL PRO STAR

P808-1003-SCR

03/15/2013

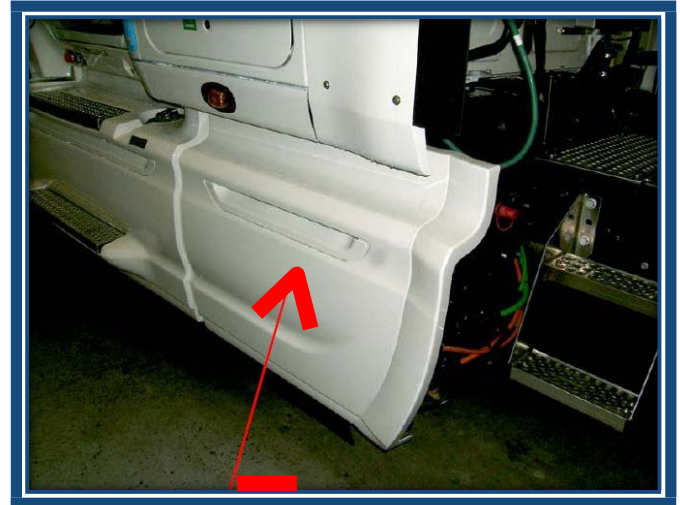


Doc 1.01  
INST064



**INSTALLATION INSTRUCTIONS**

Step 1: This manual covers installations with the batteries under the drivers door versus behind the rear fairing.



Step 2: A hole must be drilled in the floor behind the driver's seat for the inverter harness to be routed through. First pull the carpet back and make sure that the wires that run under the carpet are back out of the way and do not get damaged when drilling the hole. There is also a harness under the floor that can be damaged if the hole saw is ran past the floor when drilled.



Step 3: Once everything has been inspected and cleared for drilling, drill a hole in the floor using a drill and a 3 1/2" hole saw.



**INSTALLATION INSTRUCTIONS**

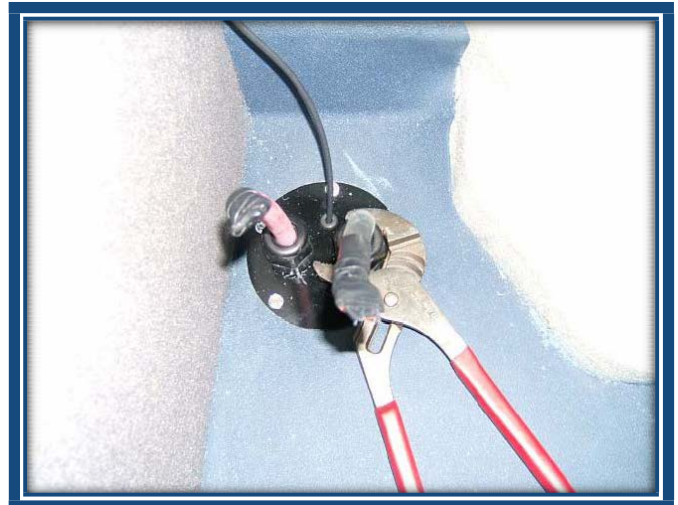
Step 4: Route the harness from inside the cab through the hole and to the batteries. Make sure to keep the harness on the back side of the marker light harness as shown.



Step 5: Attach the mounting plate to the floor using a drill and the supplied self-drilling screws.



Step 6: With the cable grips loosened, slide enough cable through to be able to make the connections to the inverter. Tighten the cable grips to hold the cables in place.





**INSTALLATION INSTRUCTIONS**

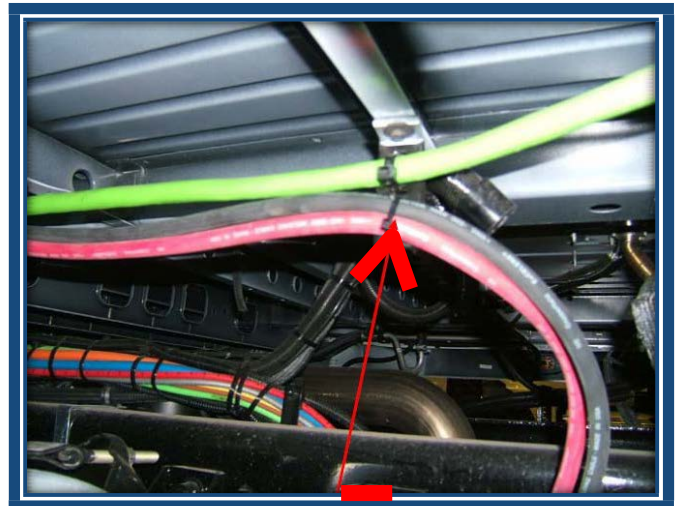
Step 7: Connect the inverter harness positive and negative cables respectively to the inverter. Also connect the 10 gauge chassis ground wire to the inverter chassis ground connection or inverter body as shown.



Step 8: Mount the inverter to the front of the bunk storage area. Push any excess cable back through the cable grips without putting too much strain on the cables. Securely tighten the cable grips.



Step 9: Wire tie the cables to the two brackets that support the seven-way cable. Use the supplied split loom conduit to cover the inverter harness cables under the cab.

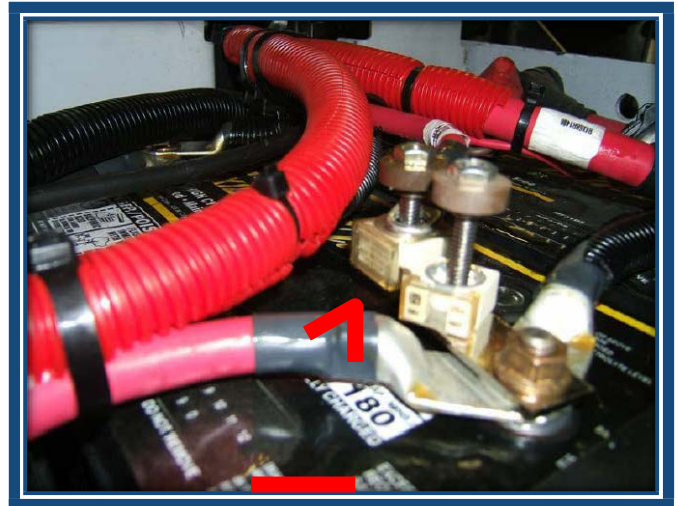


**INSTALLATION INSTRUCTIONS**

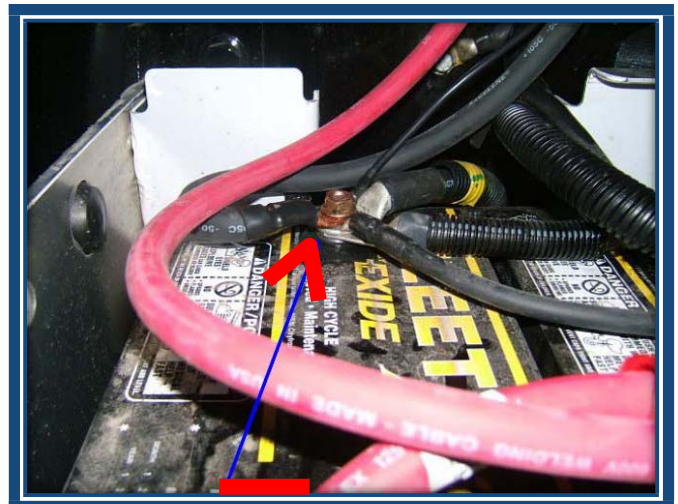
Step 10: Disconnect the factory cable from the single fuse cube on the battery. Remove the single fuse cube bracket from the battery.



Step 11: Install the supplied dual fuse cube bracket and fuse cubes (the 100 amp supplied with the inverter harness, and the 200 amp previously removed) back on the same battery post as the single bracket was removed from in the previous step. Do NOT connect the cables at this time.



Step 12: Connect the inverter harness ground cable and the 10 gauge chassis ground cable to the negative post of the first battery.



**INSTALLATION INSTRUCTIONS**

Step 13: Connect the inverter harness positive cable on top of the 100 amp fuse cube, install nut and tighten properly. Connect the factory cable on top of the 200 amp fuse cube, install nut and tighten properly.

**REQUIRED INSTALLATION TOOLS**

- Electric or cordless drill
- 3 1/2" hole saw and arbor
- 5/16 socket and holder for drill
- 7/16 wrench or socket
- 9/16 wrench or socket
- Channel locks



## LIMITED COMMERCIAL WARRANTY POLICY

Purkeys Fleet Electric, Inc. (hereafter "Purkeys"), warrants each product to be free of defects in material or workmanship under normal use and service. This warranty is for the benefit of Original Equipment Manufacturers, Dealers, Warehouse Distributors, Fleets, or other End Users (hereafter "Customers") and covers products manufactured by Purkeys and sold new to Customers either directly by Purkeys or by its authorized dealers, distributors, or agents. The length of the Warranty Period is 24 months.

The warranty period commences on the in-service or install date and is not transferable. Failure to provide the in-service or install date on the warranty claim form will cause the warranty period to begin on the date the part was manufactured or date of sale recorded on the original sales invoice, whichever is earlier.

A completed warranty claim form should accompany all parts submitted to Purkeys for consideration for repair or replacement under warranty. The submitted claim form should contain all of the information required. Lack of a properly or fully completed claim form will result in delay or denial of warranty claim. Claims must be submitted no later than 30 days after part is removed.

This warranty does not apply if, in sole judgement of Purkeys, the product has been damaged or subjected to accident, faulty repair, improper adjustment, improper installation or wiring, neglect, misuse, or alteration or if the product failure is caused by defects in peripheral vehicle components or components attached to the Product or failure of a part not manufactured by Purkeys.

This warranty shall not apply if any Purkeys product is used for a purpose for which it is not designed or is in any way altered without the specific prior written consent of Purkeys. ANY Product alleged by a Customer to be defective must be inspected by Purkeys as a part of the warranty claims process in order to confirm that the part has failed as a result of a defect in material or workmanship.

Transportation for products and parts submitted to Purkeys for warranty consideration must be prepaid by Customer. Repaired or replaced products and or components will be returned to Customer pre-paid by Customer or "freight collect" to the address provided by Customer in the warranty claim form. No charge will be made for labor or material in effecting such repairs.

The Warranty provided by Purkeys hereunder is specifically limited to repair or replacement of the Product as Purkeys deems most appropriate in its sole discretion. Purkeys neither assumes nor authorizes any other person to assume on its behalf any other warranty or liabilities in connection with Purkeys products. The Warranty does not apply to fuses or other "consumable" or maintenance items which are or may be a part of any Purkeys product.

**INVERTER HARNESS INSTALLATION**

---

THIS WARRANTY DOES NOT APPLY TO LOSS OF VEHICLE OR EQUIPMENT, LOSS OF TIME, INCONVENIENCE, OR OTHER INCIDENTAL OR CONSEQUENTIAL DAMAGES. PURKEYS SPECIFICALLY DISCLAIMS AND SHALL NOT BE LIABLE FOR INCIDENTAL OR CONSEQUENTIAL DAMAGES arising out of or from the use of Purkeys products by the Customer.

THIS LIMITED WARRANTY IS IN LIEU OF ALL OTHER WARRANTIES, INCLUDING COMMON LAW WARRANTIES OF FITNESS FOR A PARTICULAR PURPOSE, MERCHANTABILITY, AND ANY OTHER EXPRESS OR IMPLIED WARRANTIES. ALL OTHER SUCH WARRANTIES ARE SPECIFICALLY DISCLAIMED.

This Limited Commercial Warranty supersedes all previous Warranty Policies issued by Purkeys and any of its suppliers.